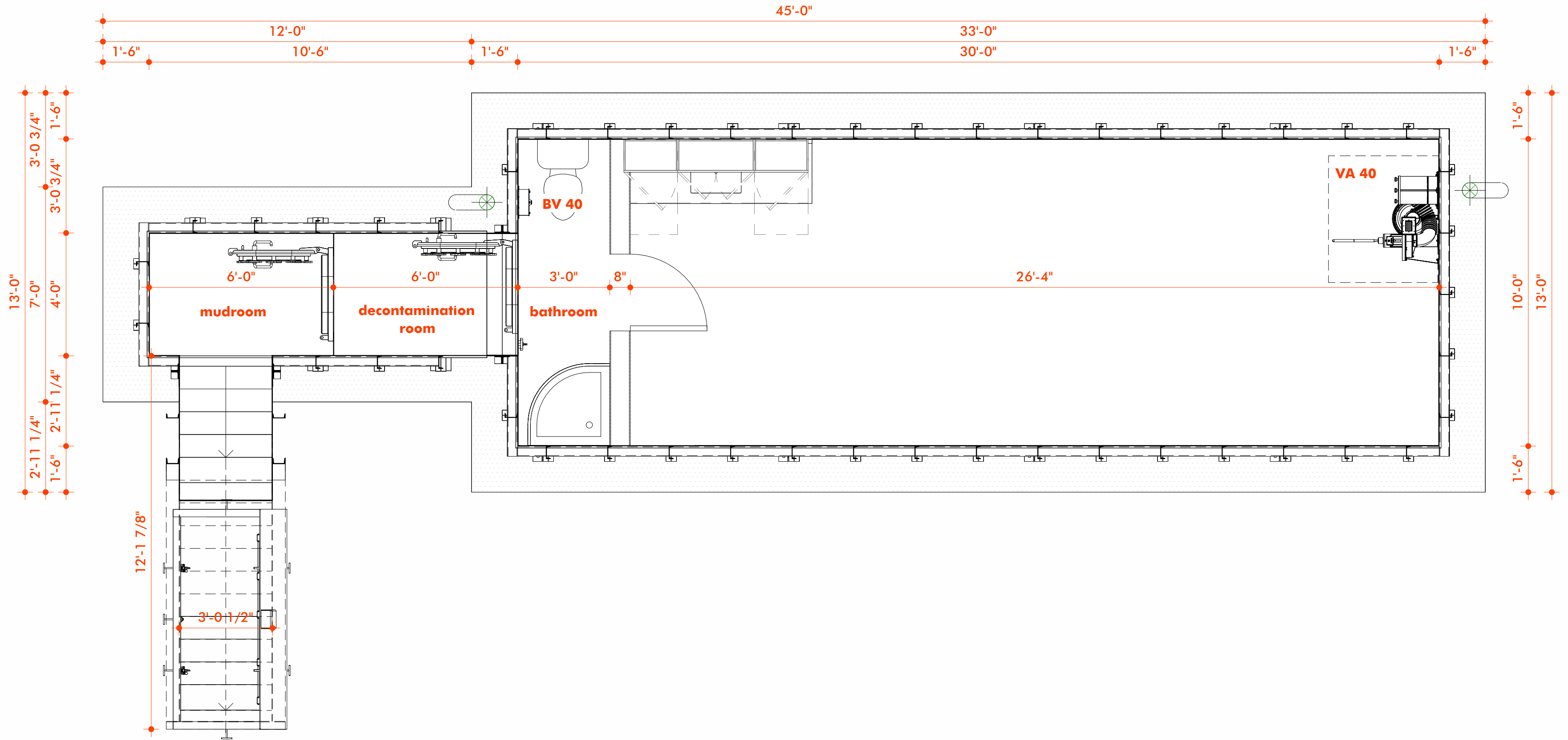


1

Floorplan

SCALE: 3/8" = 1'-0"

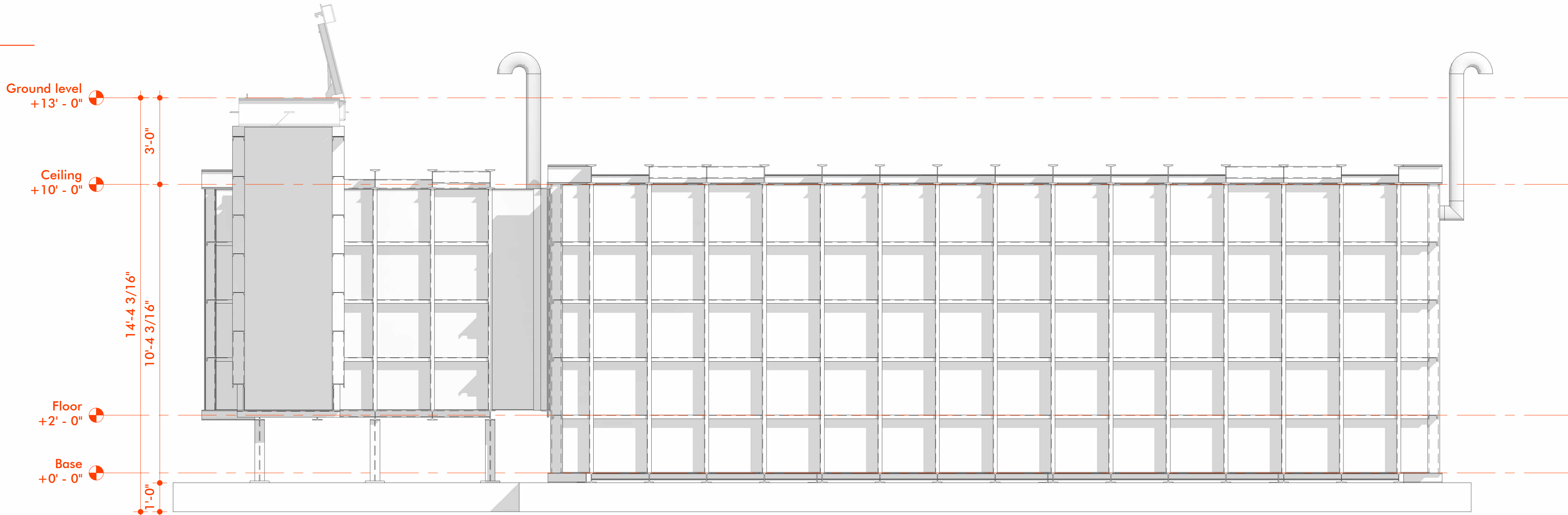
5'



2

South Elevation

SCALE: 3/8" = 1'-0"



Type

PLATINUM

10x30

Date

2/6/2025

Revision no.

Notes

1. ALL PLATE MATERIAL TO BE 1/4" A36
2. W8x18# BEAMS ALONG TOP
3. W4x14# BEAMS ALONG BOTTOM
4. W/C4x5 4# CROSS STRAPS
5. EXTERIOR PAINT: SHERWIN WILLIAMS TAR GUARD COAL TAR EPOXY #B69BG
6. INTERIOR PAINT: SHERWIN WILLIAMS MICROPOXY 646

- FOUNDATION PLAN
- MINIMUM REQUIREMENTS FOR CONCRETE
- 12" THICK CONCRETE SLAB
- CONCRETE SHOULD EXTEND 12" PAST OUTSIDE OF SHELTER ON ALL SIDES
- 2 ROWS OF NO. 4 REBAR IN BOTH DIRECTIONS
- 3' FROM TOP AND BOTTOM OF SLAB
- 3' FROM EITHER SIDE OF SLAB

Client

XX
RHODE ISLAND

Project no.: 00

Scale 3/8" = 1'-0"

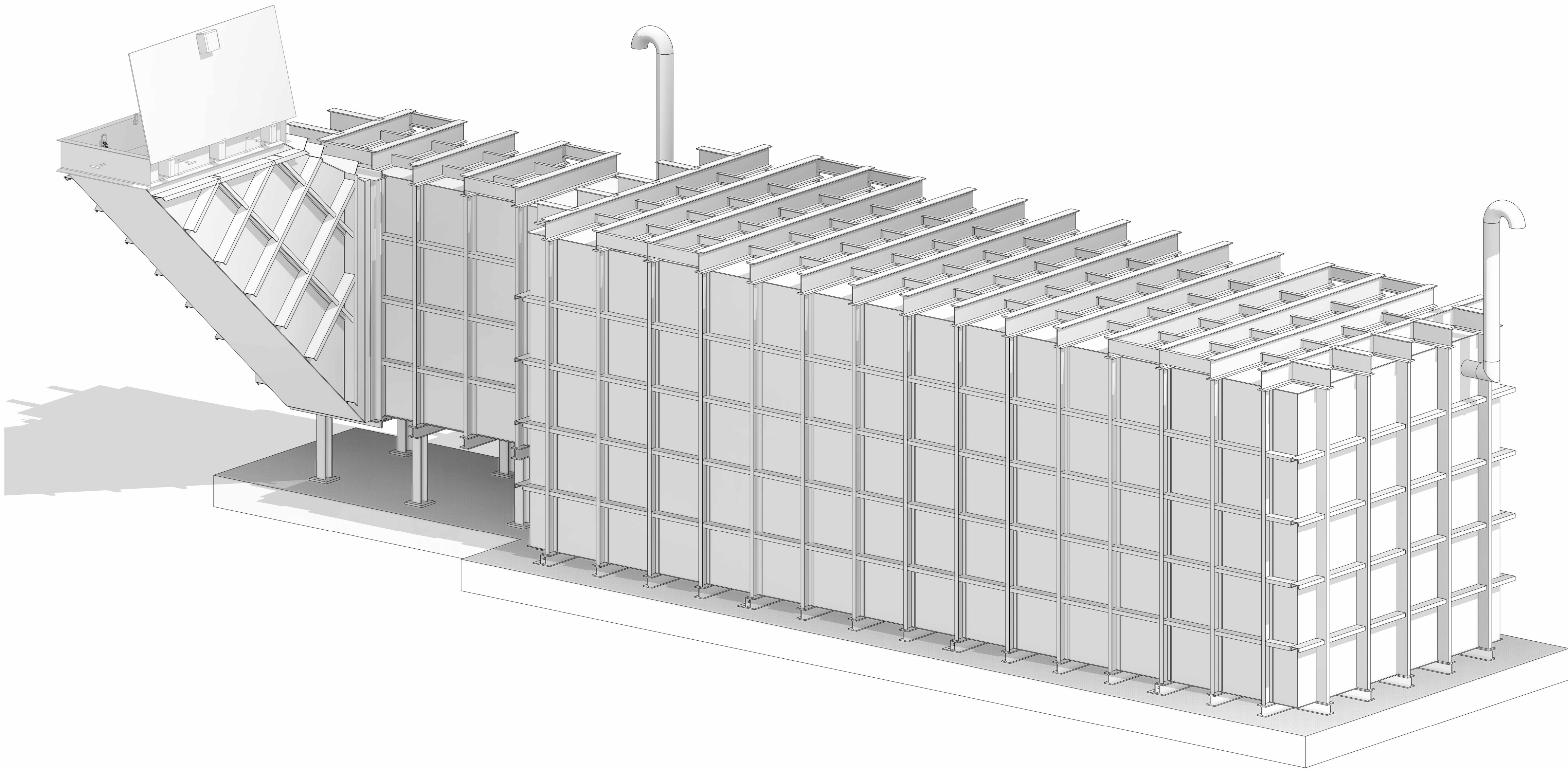
A101

Sheet No.

1

3D view – Isometric

SCALE:



Type

PLATINUM

10x30

Date

2/6/2025

Revision no.

Notes

1. ALL PLATE MATERIAL TO BE 1/4" A36
2. W8x18# BEAMS ALONG TOP
3. W4x14# BEAMS ALONG BOTTOM
4. W/C4x5.4# CROSS STRAPS
5. EXTERIOR PAINT: SHERWIN WILLIAMS TAR GUARD COAL TAR EPOXY #B69B60
6. INTERIOR PAINT: SHERWIN WILLIAMS MICROPOXY 646

• FOUNDATION PLAN
MINIMUM REQUIREMENTS FOR CONCRETE

12" THICK CONCRETE SLAB

CONCRETE SHOULD EXTEND 12" PAST
OUTSIDE OF SHELTER ON ALL SIDES

2 ROWS OF NO. 4 REBAR IN BOTH
DIRECTIONS
3" FROM TOP AND BOTTOM OF SLAB
3" FROM EITHER SIDE OF SLAB

Client

XX
RHODE ISLAND

Project no.: 00

Scale

A102

Sheet No.