

Armored door

Shelter closure for 1 + 3 bar protection level

PT-1, PT-2, PT-4

Specification:

Manufacturer: LUNOR, G.Kull AG
CH-8041 Zurich

Manufactured and manufactured according to the technical instructions of the Federal Office for Civil Protection.

Consisting of:

Door body made of steel profile with rubber seal and welded-in reinforcement body, removable locking pins on both sides. Internal locks with safety bolts to protect against accidental opening, pressure surges, and earth tremors (shock).

Door frame with angle steel with solid anchors and double hinges.
Steel parts are primed. Rubber seals must not be removed for painting.

Armored door, type PT-1

BZS No. SR 14-701

Nominal size:

Width: 80 cm
Height: 185 cm
20 cm
Thickness: 3 bar
Protection level: Weight without concrete: 250 kg

Armored door, type PT-2

BZS No. SR 14-701

Nominal size:

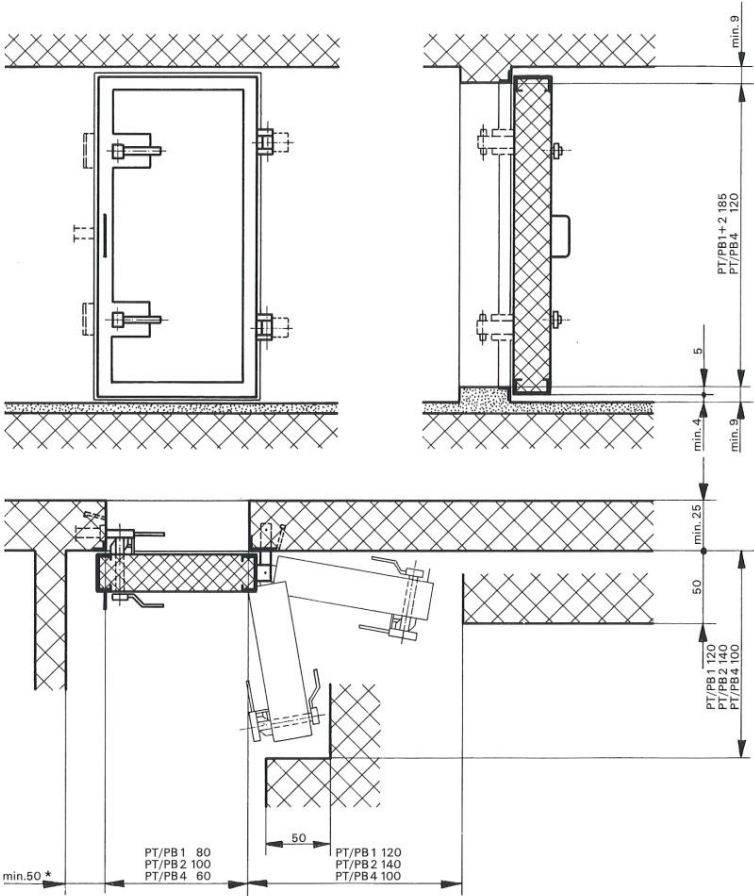
Width: 100 cm
Height: 185 cm
20 cm
Thickness: 3 bar
Protection level: Weight without concrete: 250 kg

Armored door, type PT-4

BZS No. SR 14-701

Nominal size:

Width: 60 cm
Height: 120 cm
20 cm
Thickness: 3 bar
Protection level: Weight without concrete: 170 kg



* for lock inner wall = 20 cm

Installation instructions:

Always install PT and PTO doors facing outwards (pressure side). All doors must be installed so that the door body has a clearance of at least 4 cm below the door leaf to the floor and above it to the ceiling.

Securely attach the shelter closures to the frame and anchors in the formwork.

Concrete the walls first. Only after the walls have sufficiently cured may the door body be concreted. It is very important that the door body remains closed (all lever locks properly closed) and is supported against the ground with suitable means until the door body has also cured.

The spacers on the rubber seal guarantee perfect function after demolding.

Detailed installation instructions are included with the shelter closures. These instructions must be strictly followed.